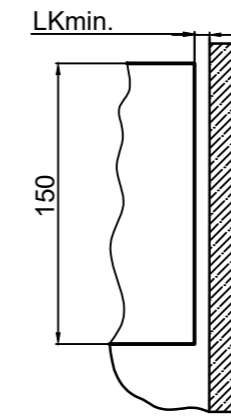
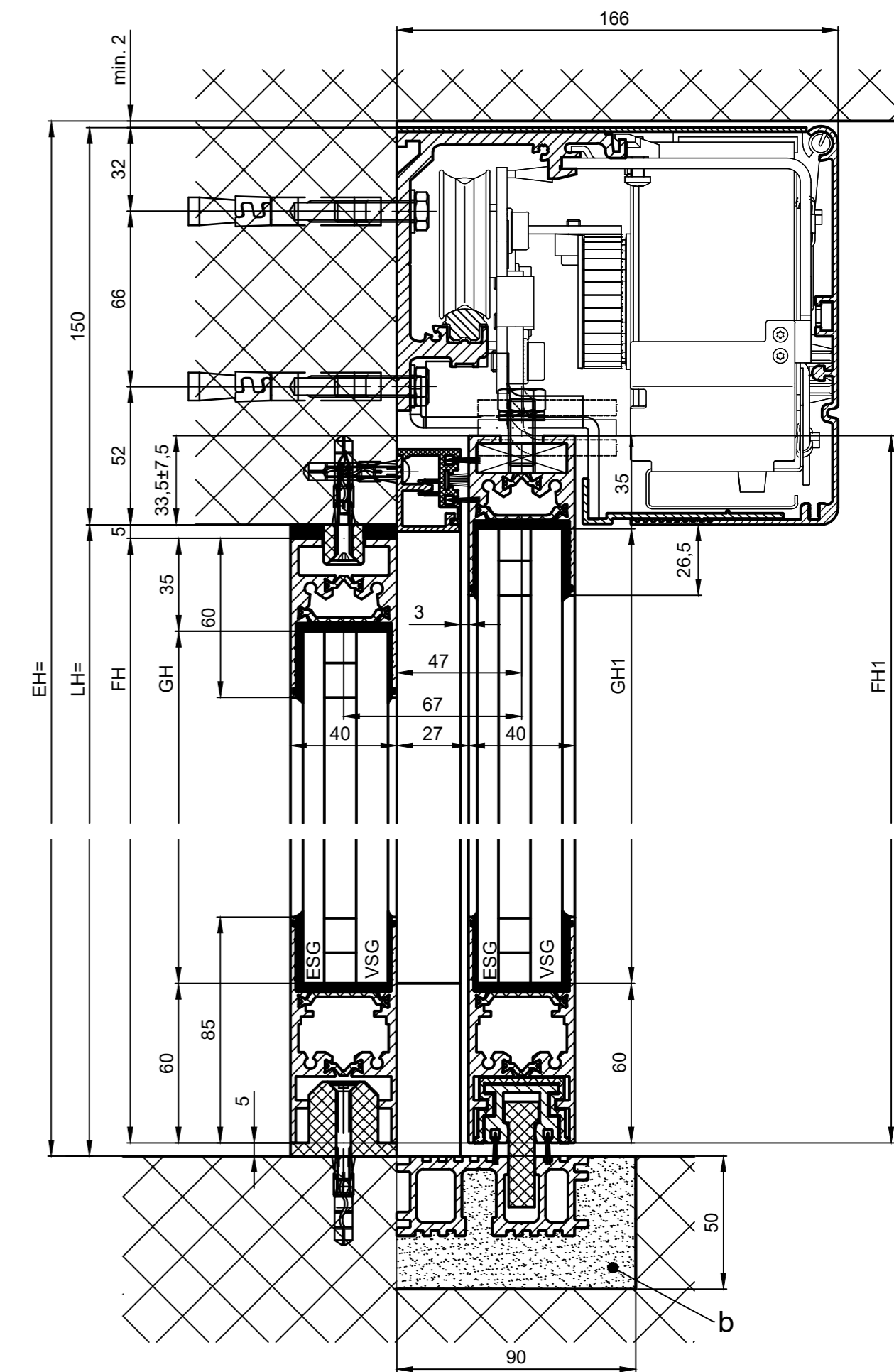
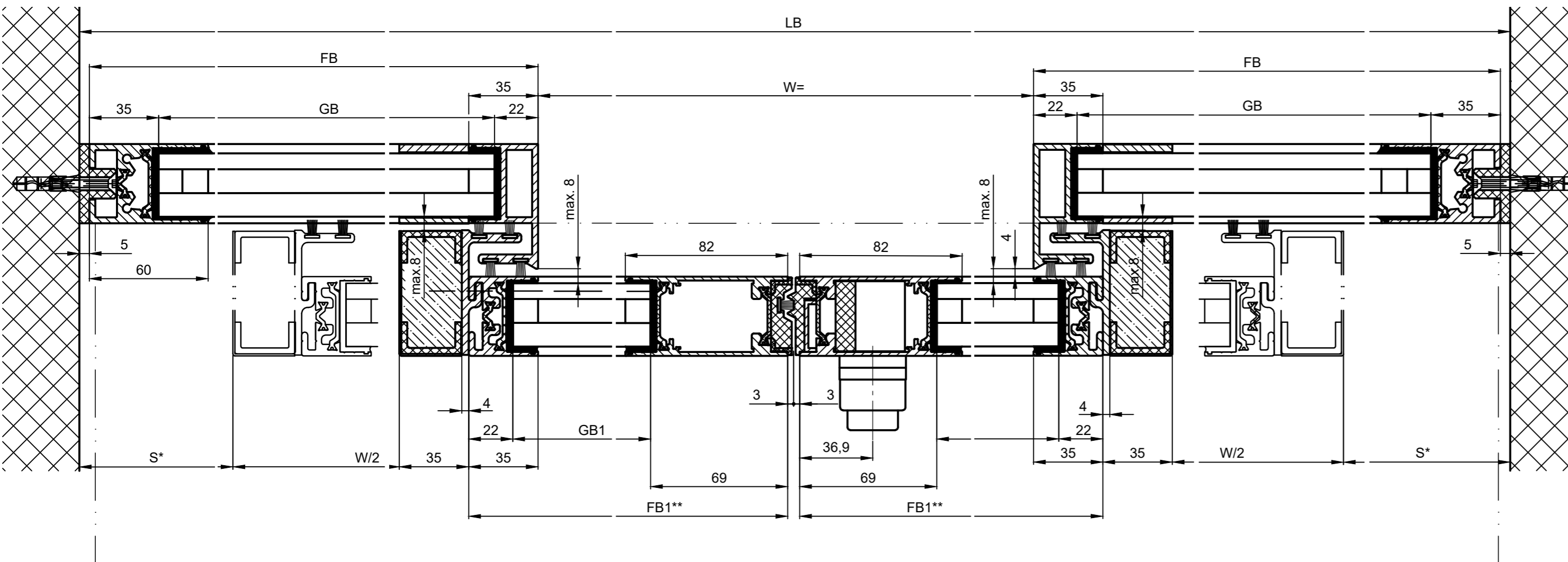
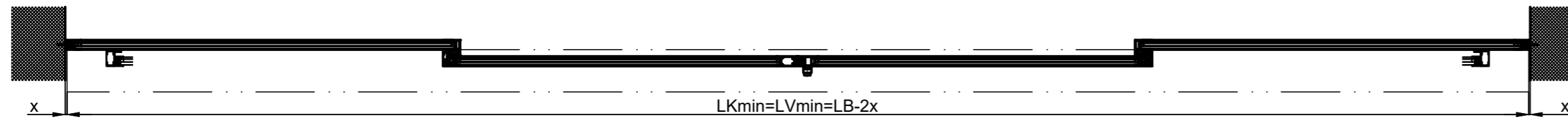


Detail Y

Wall clearance without side plate $x = \min. 8$



Note: Wall clearance with side plate $x = \min. 88$



- b) Carried out by others
- k) Distance / type and number of screw connections are selected according to building structure and strength required.

* Safety margin according to national regulation

$LB = 2W + 2S + 140$	Anodize/color	layer thickness:	Additional info:
$W = (LB - 2S - 140) / 2$		RAL	:
$LVmin = LB1 - 2x$	Object:		
$LKmin = LVmin$	Customer:		
$FB1 = W/2 + 32$	Order-Nr.:	Date:	Releasesignatur:
$FB = W/2 + S + 65$			
$GB1 = FB1 - 91$			
$GB = FB - 57$			
$FH1 = LH + 28.5$	Operator typ:	Profilsystem	Execution
$FH = LH - 10$	iMotion 2302 LR32 THERM RC2 MPVF EB MF		
$GH1 = FH1 - 95$	Scale: Drawn: 04.04.2024 MURC		
$GH = FH - 95$	% ok to print		

TORMAX AUTOMATIC
TORMAX a Division of LANDERT Group AG
CH-8180 Bulach-Zürich

Document number: **T3_390_180** Index: **E**

**= without insulating attachment