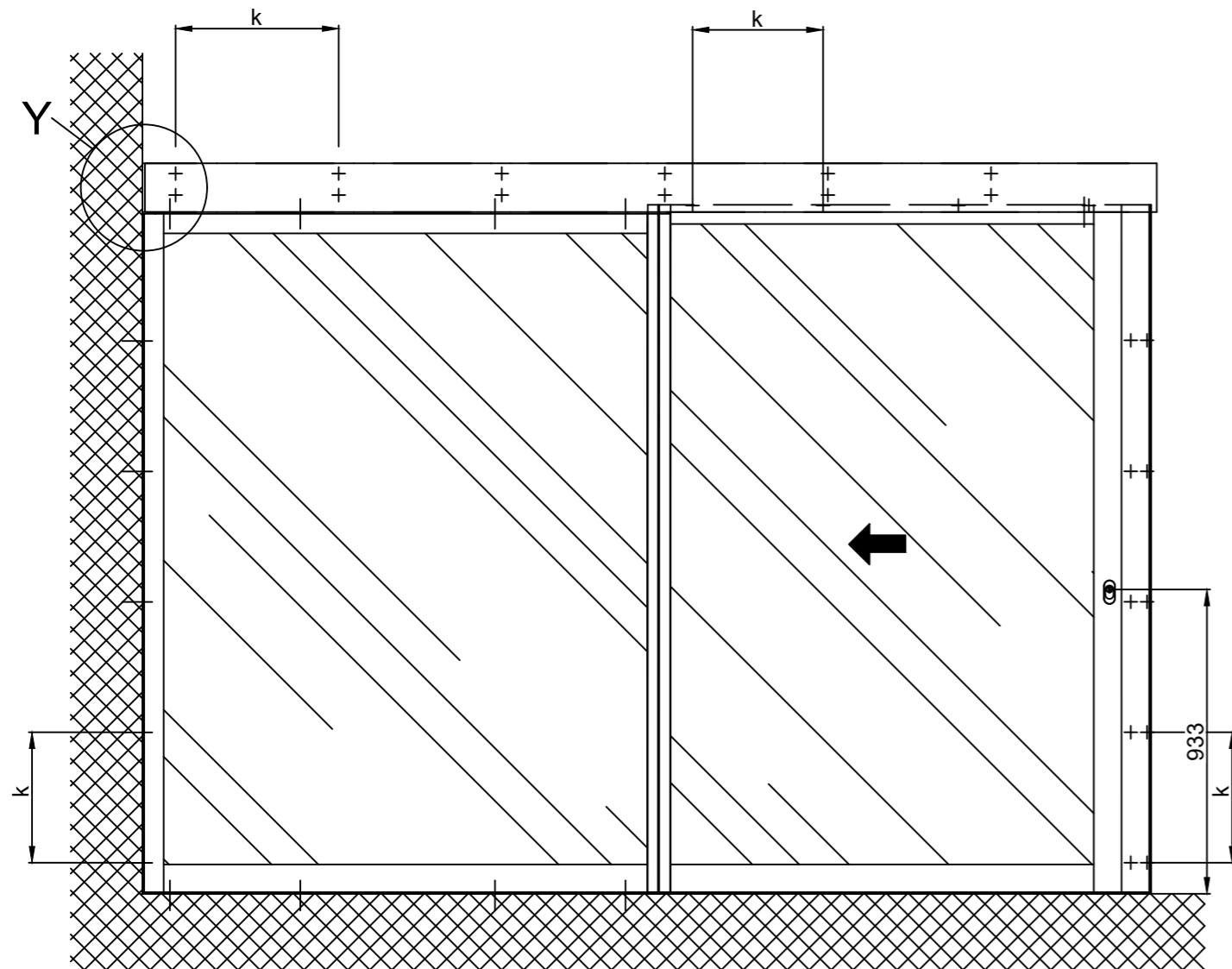
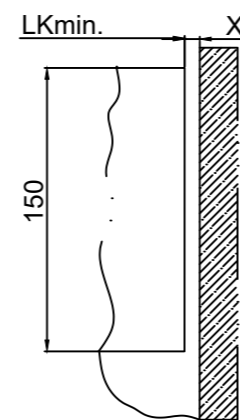


1:20

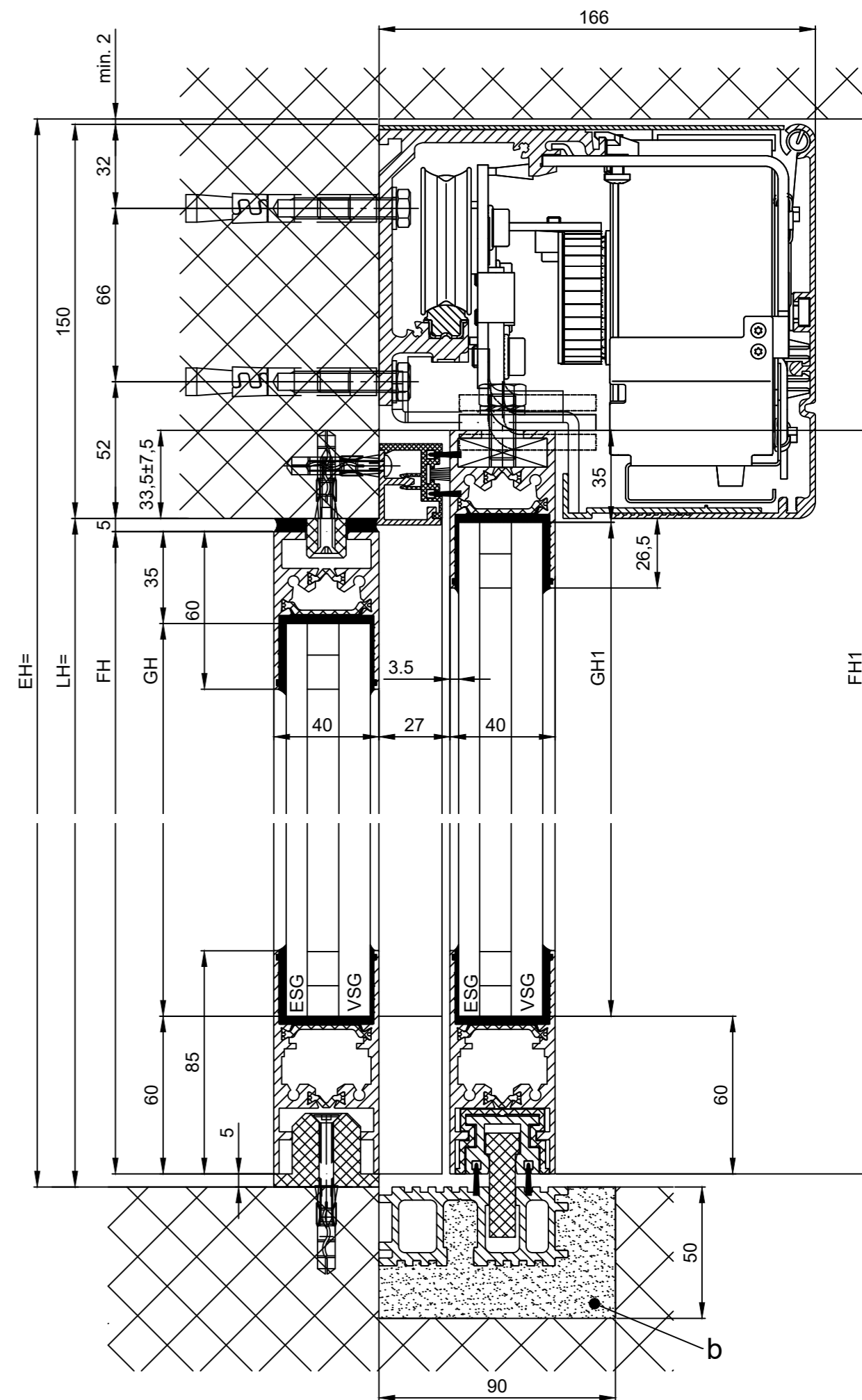
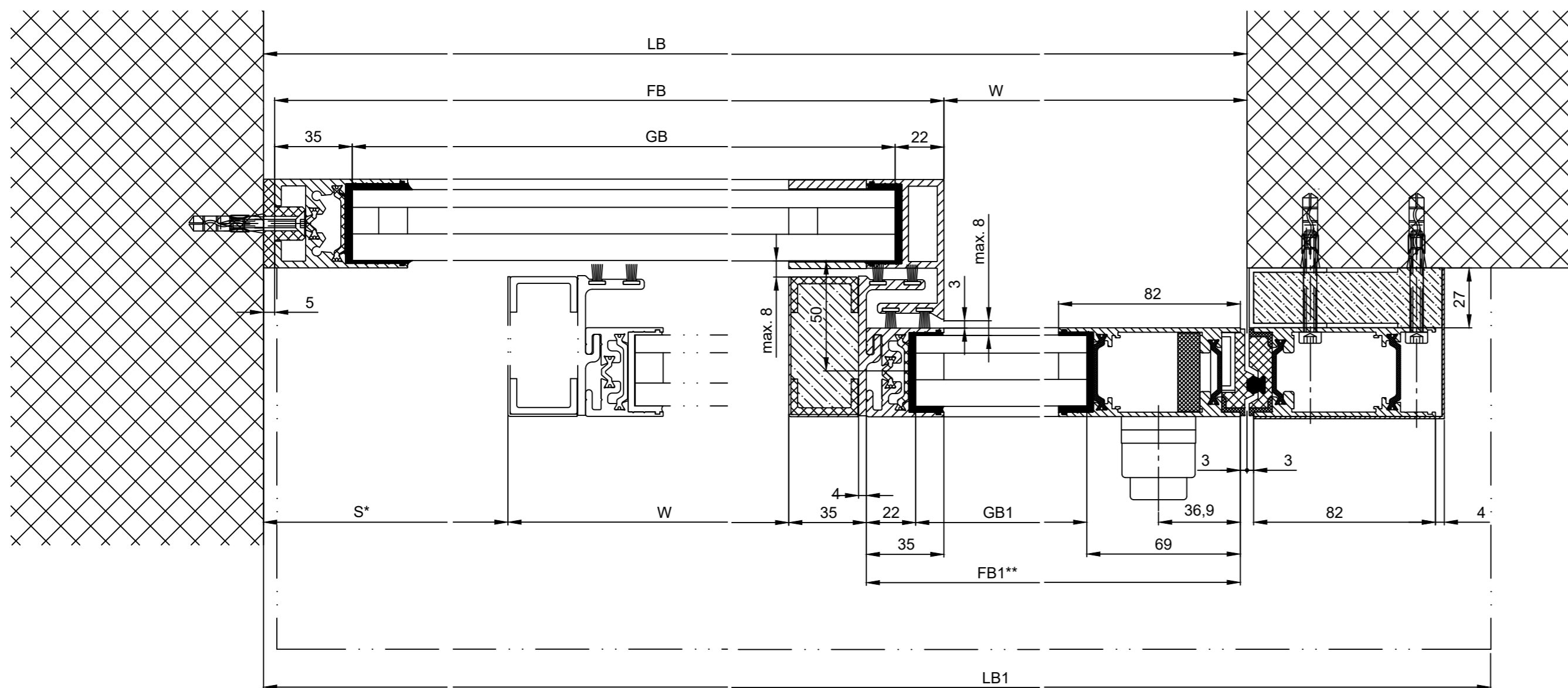
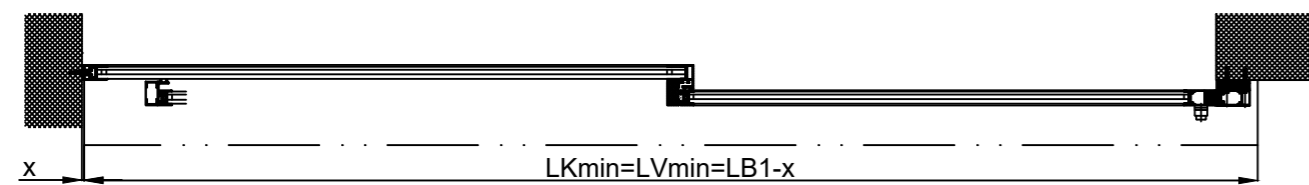


Detail Y

Wall clearance without side plate $x = \text{min.} 8$



Note: Wall clearance with side plate $x = \text{min.} 88$



b) Carried out by others
 k) Distance / type and number of screw connections are selected according to the building structure and strength required.

* Safety margin according to national regulation			
Anodize/color:	layer thickness:	Additional info:	
	RAL		
Object:			
Customer:			
Order-Nr.:	Date:	Releasesignatur:	
Dimensional Drawing	Scale %	Drawn	04.04.2024 MURO
Operator/typ: Profilsystem Execution			
iMotion 2302 LR32THERM RC2 MPVF EL MF			
TORMAX AUTOMATIC TORMAX a Division of LANDERT Group AG CH-8180 Bulach-Zürich			Document number: T3_390_181
			Index E

LB1=2W+S+180
LB=W+1
W=(LB1-S-180)/2
LVmin=LB1-28
LKmin=LVmin
FB1=W+32
FB=W+S+35
GB1=FB1-91
GB=FB1-55
FH1=LH+28.5
FH=LH-10
GH1=FH1-95
GH=FH-95

** = without insulating attachment