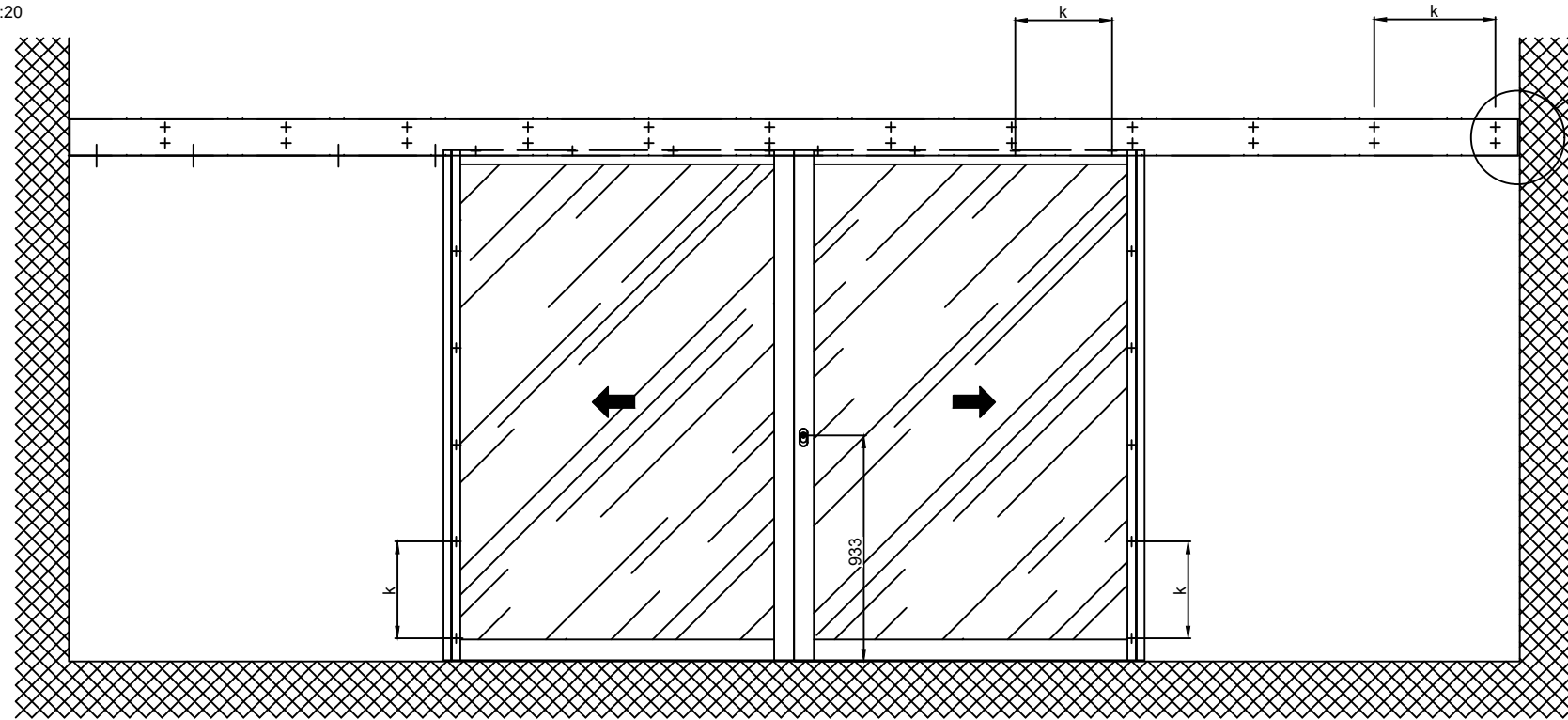
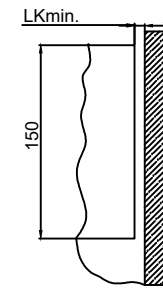


1:20

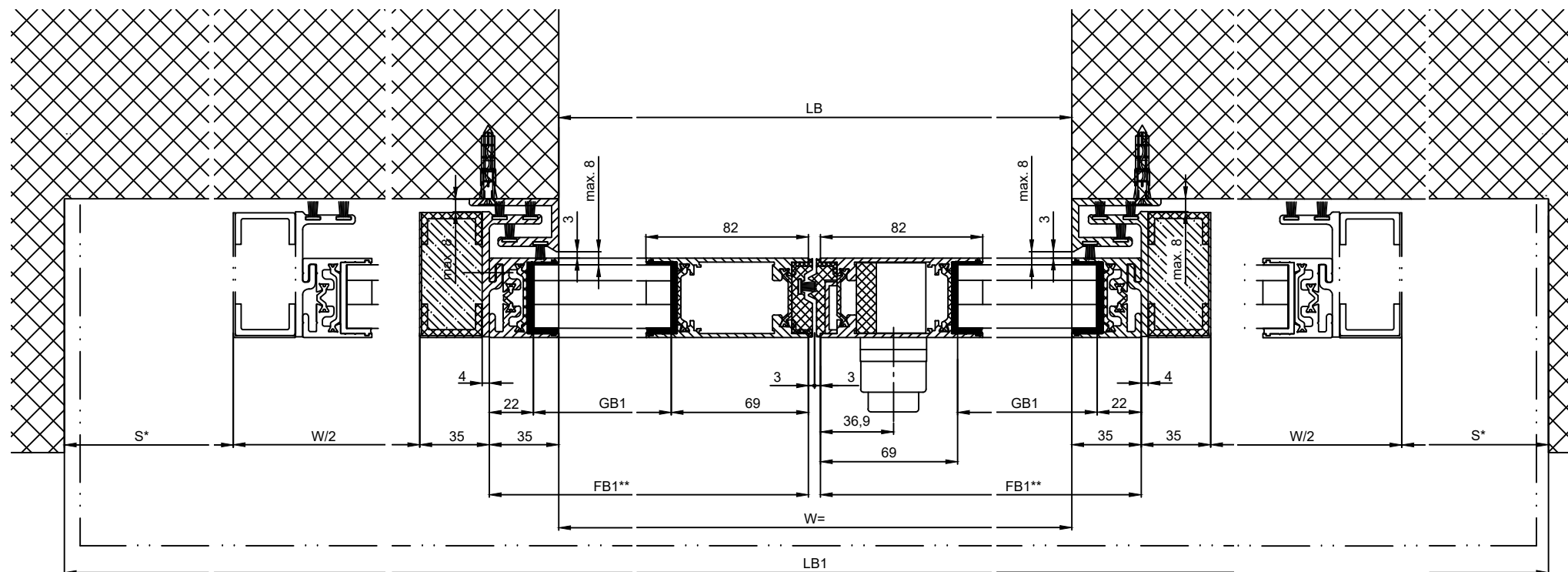
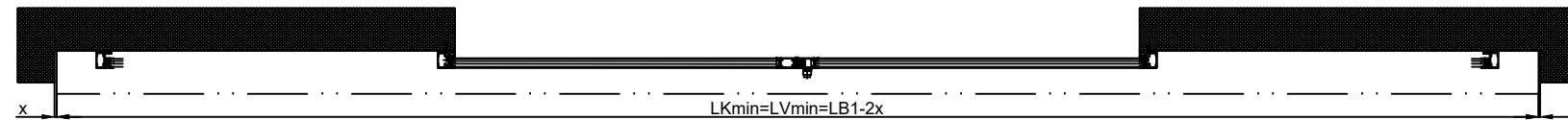
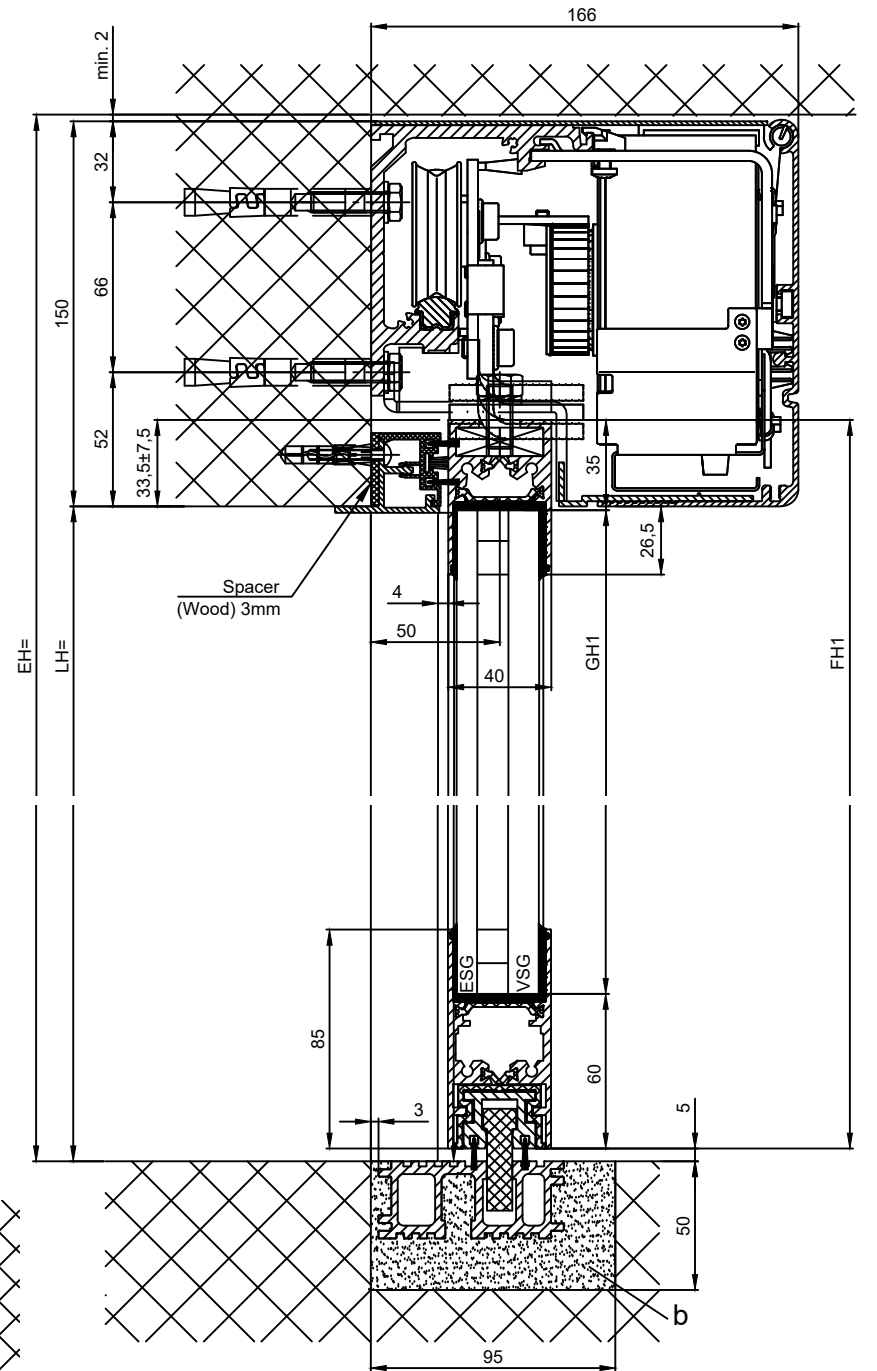


Detail Y

Wall clearance without side plate $x = \min. 8$



Note: Wall clearance with side plate $x = \min. 88$



- b) Carried out by others
- k) Distance / type and number of screw connections are selected according to the building structure and strength required.

* Safety margin according to national regulation			
Anodize/color	layer thickness:	Additional info:	
	RAL		
Object:			
Customer:			
Order-Nr.:	Date:	Releasesignatur:	
Scale	Drawn	04.04.2024	MURO
%	ok to print		
Operator: Profilsystem Execution			
iMotion 2302 LR32 THERM RC2 MPVF EB OF			
Document number:			Index
T3_390_183			E

LB1=2W+2S+140
W=(LB1-2S-140)/2
W=LB
LVmin=LB1-2x
LKmin=LVmin
FB1=W/2+32
GB1=FB1-91
FH1=LH+28.5
GH1=FH1-95

** = without insulating attachment

TORMAX a Division of LANDERT Group AG
CH-8180 Bulach-Zurich